

Infectious Diseases Data Brief

New Jersey

May 2023

Virena®

Flu A or B (% positive)

12.4% **↑** 6.1%
from previous month

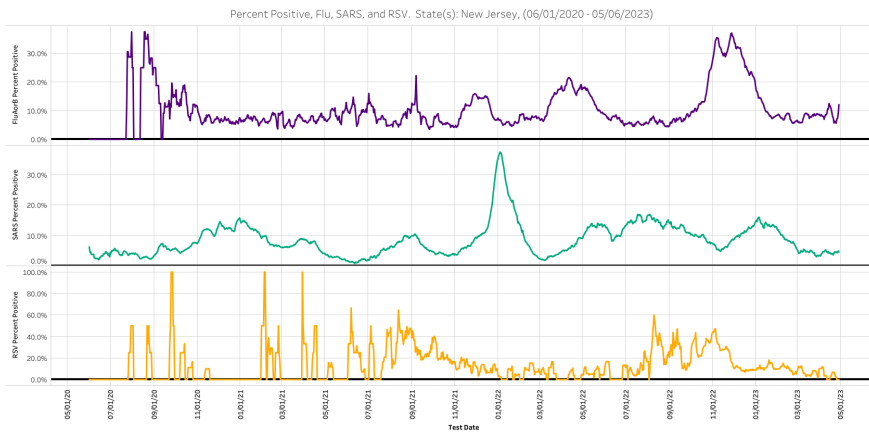
SARS (% positive)

4.8% **↓** 0.8%
from previous month

RSV (% positive)

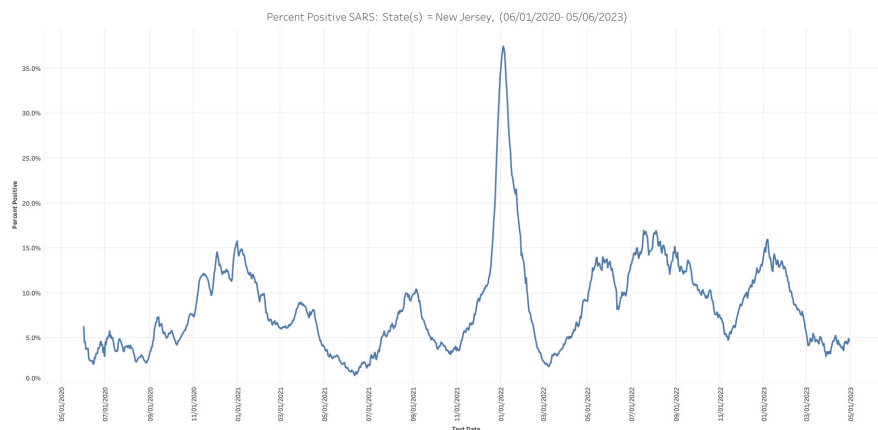
3.2% **↓** 5.1%
from previous month

Data powered by Virena®—A wireless, cloud-based system, included with QuidelOrtho Sofia, Sofia 2 and Solana instruments which allows transmission of de-identified patient results in near real time. The charts below have been generated by data from connected instruments across the US. For more information on Virena®, please visit connectme.quidel.com



New Jersey Flu/SARS/RSV Viral Infections

Viral infections throughout New Jersey and the United States as a whole are currently at a minimum. The chart shown to the left displays the occurrence of Flu (purple), SARS (green) and RSV (orange) in the state of New Jersey since May 2020.



New Jersey SARS Prevalence

The left chart illustrates the percentage of SARS prevalence (positivity rate) in the state of New Jersey starting from May 2020. While the current level is relatively low and decreasing, the chart vividly displays the successive waves of Covid that have affected New Jersey since its emergence in late 2019 to early 2020.

Infectious Diseases Data Brief

United States

May 2023

Virena[®]

Flu A or B (% positive)

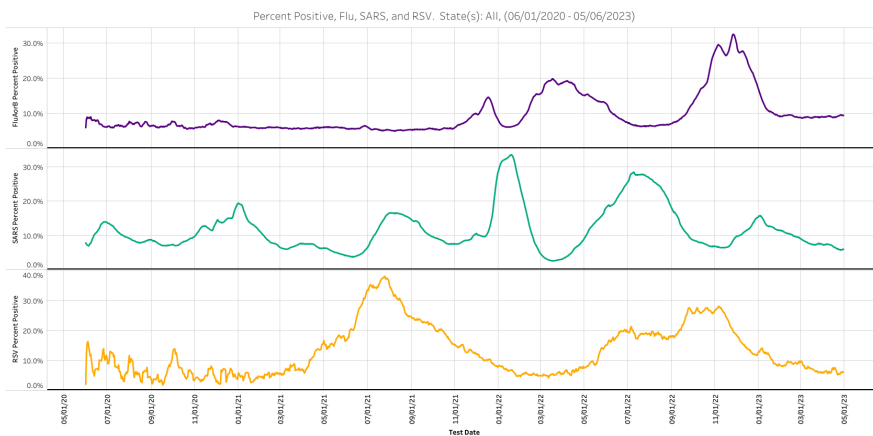
9.9% **↑** 0.1%
from previous month

SARS (% positive)

5.5% **↓** 3.5%
from previous month

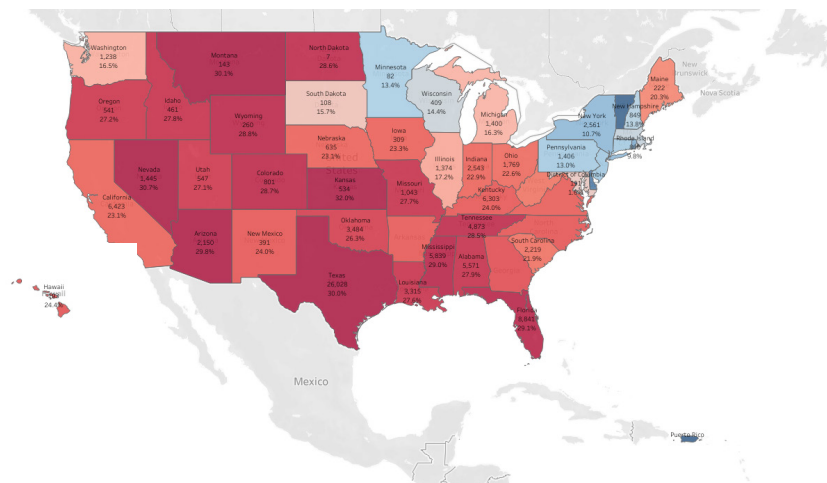
RSV (% positive)

5.7% **↓** 4.9%
from previous month



United States Flu/SARS/RSV Viral Infections

The prevalence of Flu (purple), SARS (green), and RSV (orange) throughout the United States since May 2020 is depicted in this chart. Notably, the data highlights the absence of RSV and Flu prevalence during the 2020-2021 season (typically spanning from October to May). This lack of prevalence is likely attributed to measures such as masking, sheltering, social distancing, and viral interference.



United States SARS Prevalence

The choropleth map represents the SARS prevalence across the United States for the week of 7/1/2022, capturing the peak of a SARS wave. This map illustrates the areas where SARS is most prevalent and the extent of its prevalence during a specific week. It is worth noting the color spectrum, ranging from blue indicating the low prevalence to red indicating the highest prevalence. The upper limit of the scale, set at 30% in this instance, demonstrates the maximum level of prevalence depicted on the map.



At QuidelOrtho, we transform diagnostic data into answers, understanding and action, illuminating the path forward for all. For more than 80 years, we've pursued the unknown with a passion and purpose to improve health. And we'll continue to transform the power of diagnostics into a healthier future for all.

9975 Summers Ridge Road
San Diego, CA 92121 USA

800-874-1517
quidelortho.com

© 2023 QuidelOrtho Corporation
BR1011300EN00 (05/23)